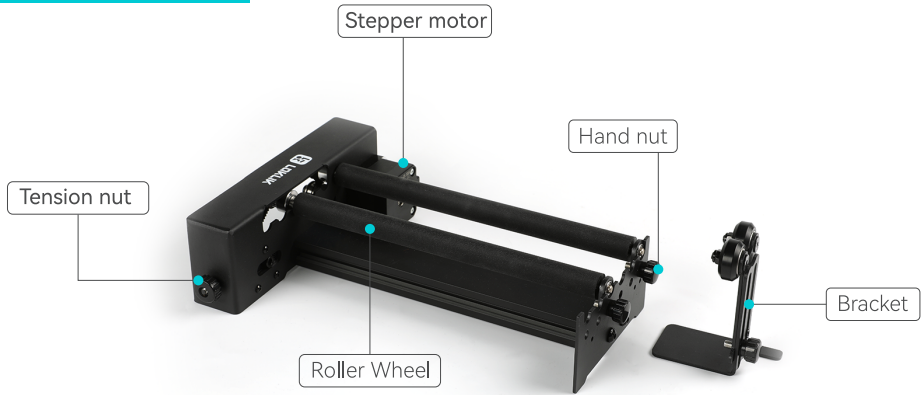
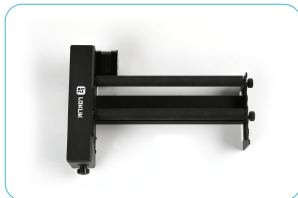


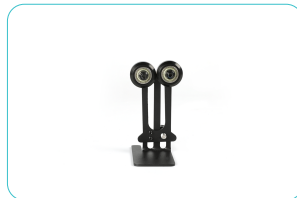
Product Overview



Included in the Box



▶ Rotary Attachment × 1



▶ Bracket × 1



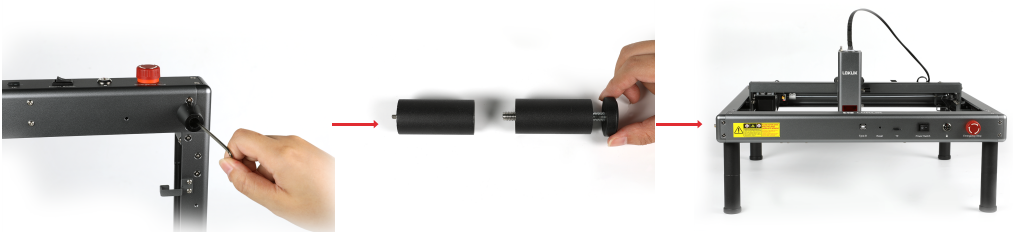
▶ White Extension Cable (Recommended Use) × 1
▶ Black Extension Cable × 1

Usage Notes

1 Ensure the rotary attachment is aligned parallel to the X-axis of the engraver and remains level and stable;

2 If the material thickness exceeds the adjustable height of the laser module, you need to install the extension legs.

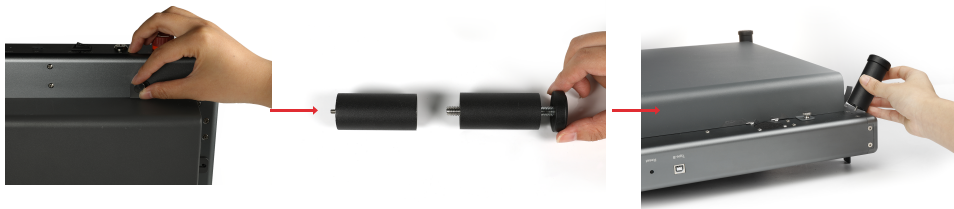
2.1 For LOKLiK iEngrave™, the extension legs need to be purchased separately. Loosen the 4 screws inside the support feet and remove the extension pad, and then install the extension legs.



2.2

For LOKLiK iEngrave™ – Cover, the extension legs are included in the package.

Loosen the screws to fix the bottom shell and remove it. Then loosen the screws to fix the extension pads, remove the pads, screw extension leg 2 to extension leg 1, and reinstall the pads.



Instructions for Use

There are 5 gears to fit different sizes of engraving materials:



Gear1: $6 \text{ mm} \leq d \leq 30 \text{ mm}$



Gear2: $30 \text{ mm} \leq d \leq 75 \text{ mm}$



Gear3: $75 \text{ mm} \leq d \leq 145 \text{ mm}$



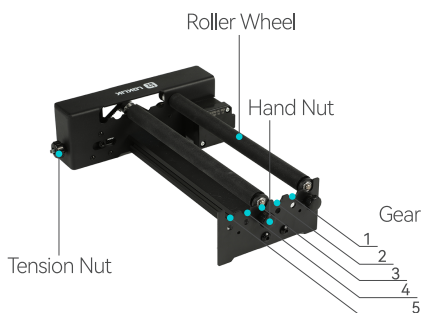
Gear4: $145 \text{ mm} \leq d \leq 230 \text{ mm}$



Gear5: $230 \text{ mm} \leq d \leq 300 \text{ mm}$

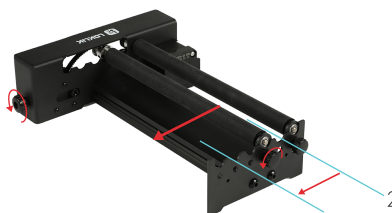
1. Adjust the Gears;

eg.: From gear 2 to gear 4



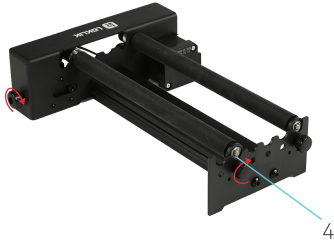
1.1

Turn the tension nut counterclockwise to loosen the timing belt. Then turn the hand nut counterclockwise to loosen the roller wheel;



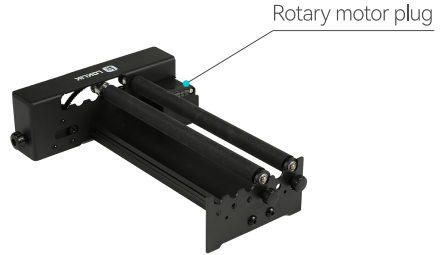
1.2

Move the roller wheel to gear 4 and tighten the hand nut and the tension nut clockwise accordingly.



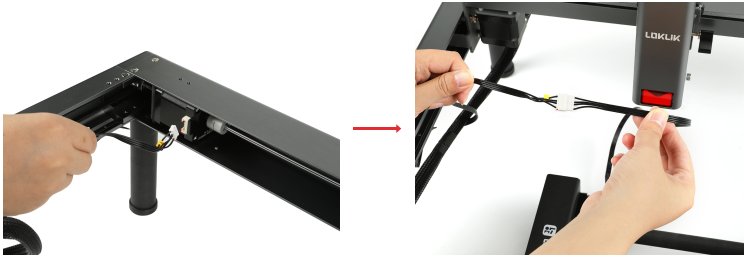
2. Connect to Device

2.1 Insert one end of the white extension cable into the port of the rotary attachment;



2.2

Unplug the cable to connect the Y-axis motor and connect the other end of the white extension cable to the unplugged Y-axis connector.

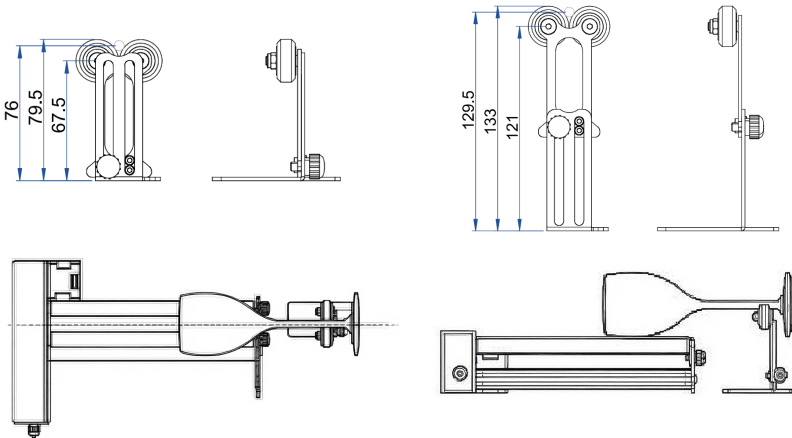


Note: For non-LOKLiK series laser engravers, if the rotary attachment shakes when using the White Extension Cable, please replace it with the Black Extension Cable.

3. Bracket Usage

Bracket Adjustable Height Range: 76 – 129 mm

Adjust the bracket height and ensure that the bracket is aligned with the centerline of the rotary roller.

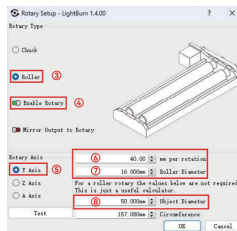
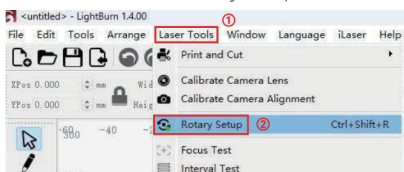


Software Instructions

1. LightBurn

1.1

Click “laser tools” – “Rotary Setup”



1.2

Set up the parameters as instructed in the following picture, and input the engraving material diameter (Diameter range: 6 – 300 mm) into the blank ⑧ in the picture:



1.3

Set up the “Start” mode as the “Current Position”;

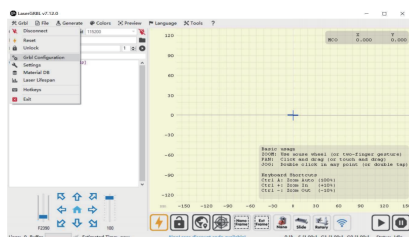
1.4

Turn on the “Cut selected graphics” and “Use selection origin”. If not using the rotary attachment, then disable the “Enable Rotary” option in the “Rotary Setup”.

2. Laser GRBL

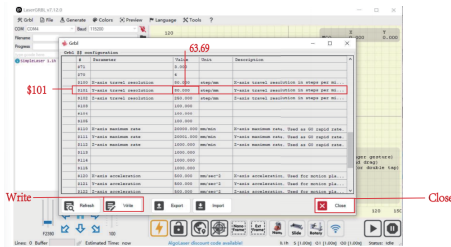
2.1

After connecting the laser engraver, click “Grbl” – “Grbl Configuration”



2.2

Find “\$101” in the pop-up window and set its value at 63.69. Click “Write” - “Close”. If you are not using the rotary attachment, set the value at 80.



3. Adjust Focal Length

Place the engraving material, slide the focal length setting pin down, loosen the thumb screw, and slide the laser module upward or downward until the pin tip touches the material surface. Then tighten the thumb screw and slide the focal length setting pin back.