

Included in The Box



▶ Air Pump × 1



▶ Air Pump Connector × 1



▶ Cable Ties × 1



▶ Rubber Plug × 1



▶ Air Pipe × 1



▶ Air Nozzle × 1



▶ Hex Wrench × 1



▶ Power Adapter × 1

Installation Instructions

1

Remove the Laser Module: Turn off the device and unplug the laser module connector. Loosen the thumb screw and remove the laser module;



2

Remove the Air Nozzle: Use the hex wrench to loosen the screw securing the air nozzle, then remove the nozzle. Check if the window lens is clean. If needed, gently wipe it with a lint-free cloth moistened with alcohol or isopropyl solution;



3

Install the New Nozzle: Attach the new nozzle to the window lens, then connect the air pipe to the nozzle. Insert the hex wrench through the side hole to tighten the top screw on the nozzle. Then, insert the rubber plug into the side hole;



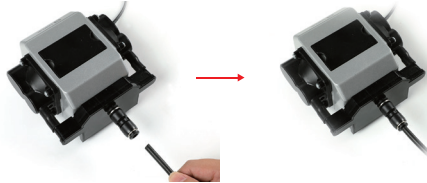
4

Install the laser module back;



5

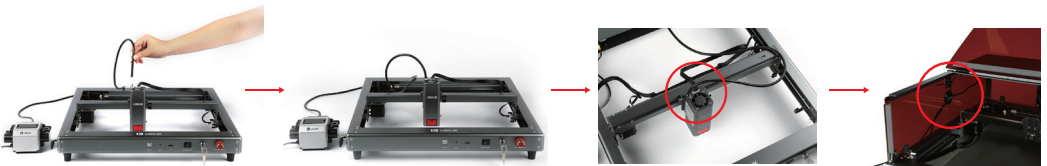
Install the Air Pump Connector: Attach the larger end of the connector to the air pump nozzle, then insert the air pipe into the other end of the connector;



6

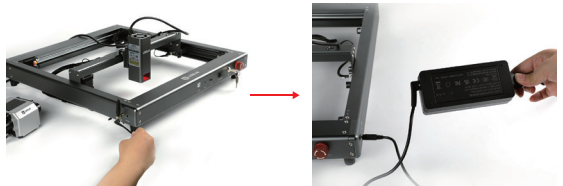
Connect the Air Pipe: Attach the other end of the air pipe to the laser module and use a cable tie to secure the pipe onto the laser for easier cable management;

Note: If the protective cover is installed, feed the pipe through the lateral cable hole first, then connect it to the laser module.



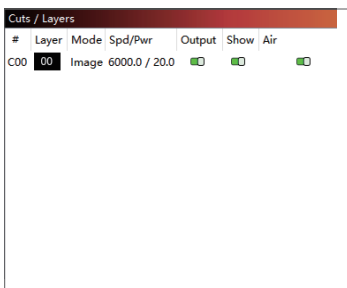
7

Power on: Insert the air pump plug into the port on the side of the laser. Replace the laser adapter with the new 90W one and use the original power cord. Then, turn on the device;



Software Instructions

1. LightBurn: Open LightBurn – go to the “Cuts/Layers” section – activate the “Air” toggle;



2. Laser GRBL: Send command “M8” in the control console to turn on the air pump and “M9” to turn it off.

